

MODEL#: EL315-QE8

TOOL HOLDER QE8-TH INCLUDED

A shortened version of EL815-QE8 with less reach for tighter spaces. For VERTICAL Fastening with Ingersoll-Rand QE8ST In-line DC Electric, Flange Mount Tools having mounting holes 3.0" (76.2mm) on center. Tool body clearance is 2.23" (56.64mm) dia below the mounting flange.

MAX TORQUE: 800 in-lbs (90 N-m)

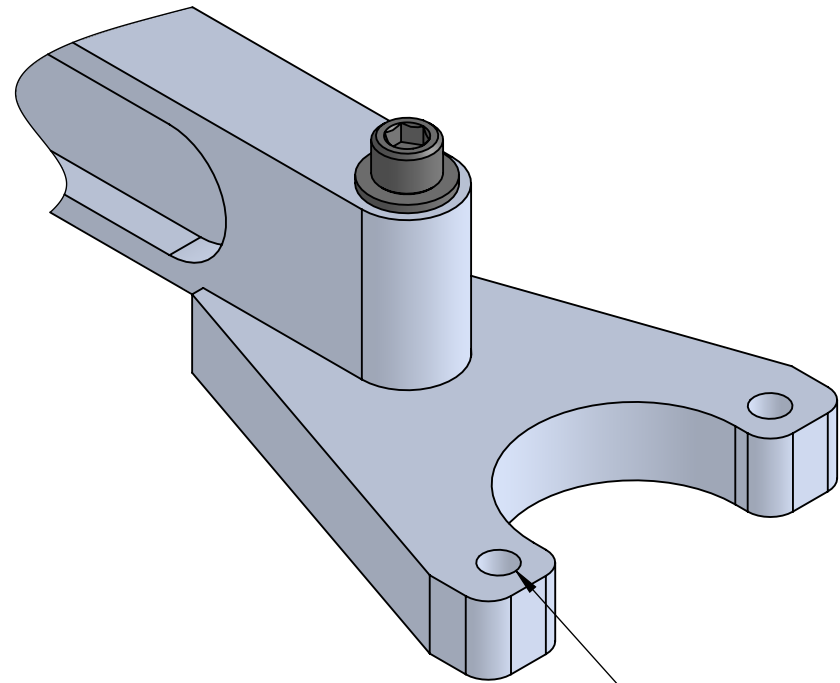
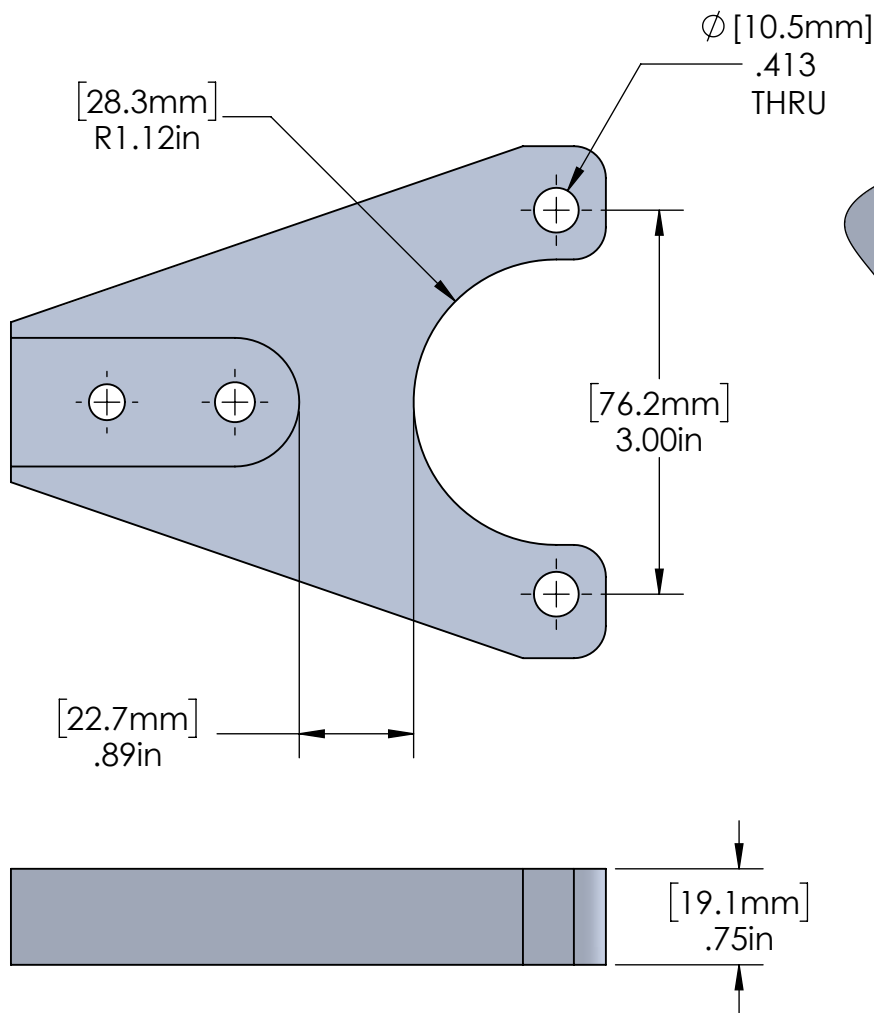
MAX. TOOLING WEIGHT: 14 lbs (6.3 kg)

COPYRIGHT © 2018 ERGONOMIC TOOL ARMS, LLC


www.toolarms.com



Ergonomic Tool Arms, LLC



CUSTOMER'S FLANGED
TOOL MOUNTS HERE

<p>www.toolarms.com</p>  <p>Ergonomic Tool Arms, LLC</p>	<p>MODEL#: QE8-TH</p> <hr/> <p>Vertical Holder for Ingersoll-Rand QE8 and QA8 In-line tools with 2 bolt mounting flange</p> <hr/> <p>COPYRIGHT © 2018 ERGONOMIC TOOL ARMS, LLC</p>
--	--